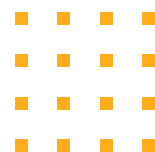
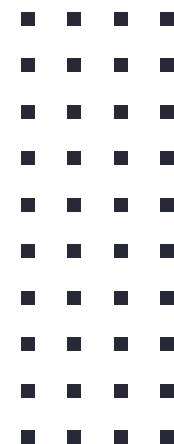




Mango's Word Search

By Julio Madrigal



Definition and requirements

- The user should be able to choose or create a word list.
- Words are randomly hidden in the array of letters, count number of overlaps to make certain complex.
- The user should be able to view the word list and know which have been found and which are not yet found.
- The player identifies and marks the found words in an appropriate visual manner.
- The player can ask for a hint.
- The player should be able to quit and return to the game later. (In Progress)
- The puzzle can be scrambled and played again.
- The player should be able to obtain additional word lists from a server without reinstalling the app. (In Progress)

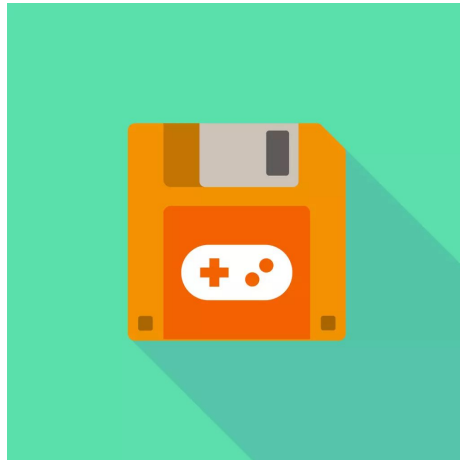
E	E	E	L	E	T	W	G	I	T	H	I	C
W	N	E	X	C	E	L	D	E	C	T	O	F
S	E	A	E	D	O	S	S	R	R	S	S	T
E	R	C	N	D	B	L	A	S	C	N	N	R
W	P	I	D	I	I	E	N	O	B	E	H	E
C	E	T	U	F	S	B	S	O	Y	R	E	O
H	I	D	I	D	V	A	S	G	O	U	E	E
R	H	I	R	O	O	W	E	T	H	E	H	G
L	T	O	R	I	E	R	I	I	N	I	G	A
L	W	E	L	E	N	L	T	Z	L	I	S	I
T	I	T	E	I	U	H	U	G	A	D	N	O
R	S	M	P	T	G	N	A	T	L	R	Y	A
O	C	G	P	P	D	E	T	W	A	I	D	R

Solution

- Android Studio that uses Java and XML
- Android 10 Q (API 29)
- Title Screen, GamePlay Activity, Result Activity

Exceptions

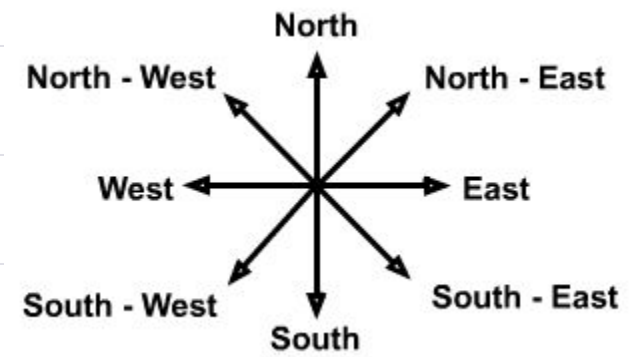
- Save Game
- Import

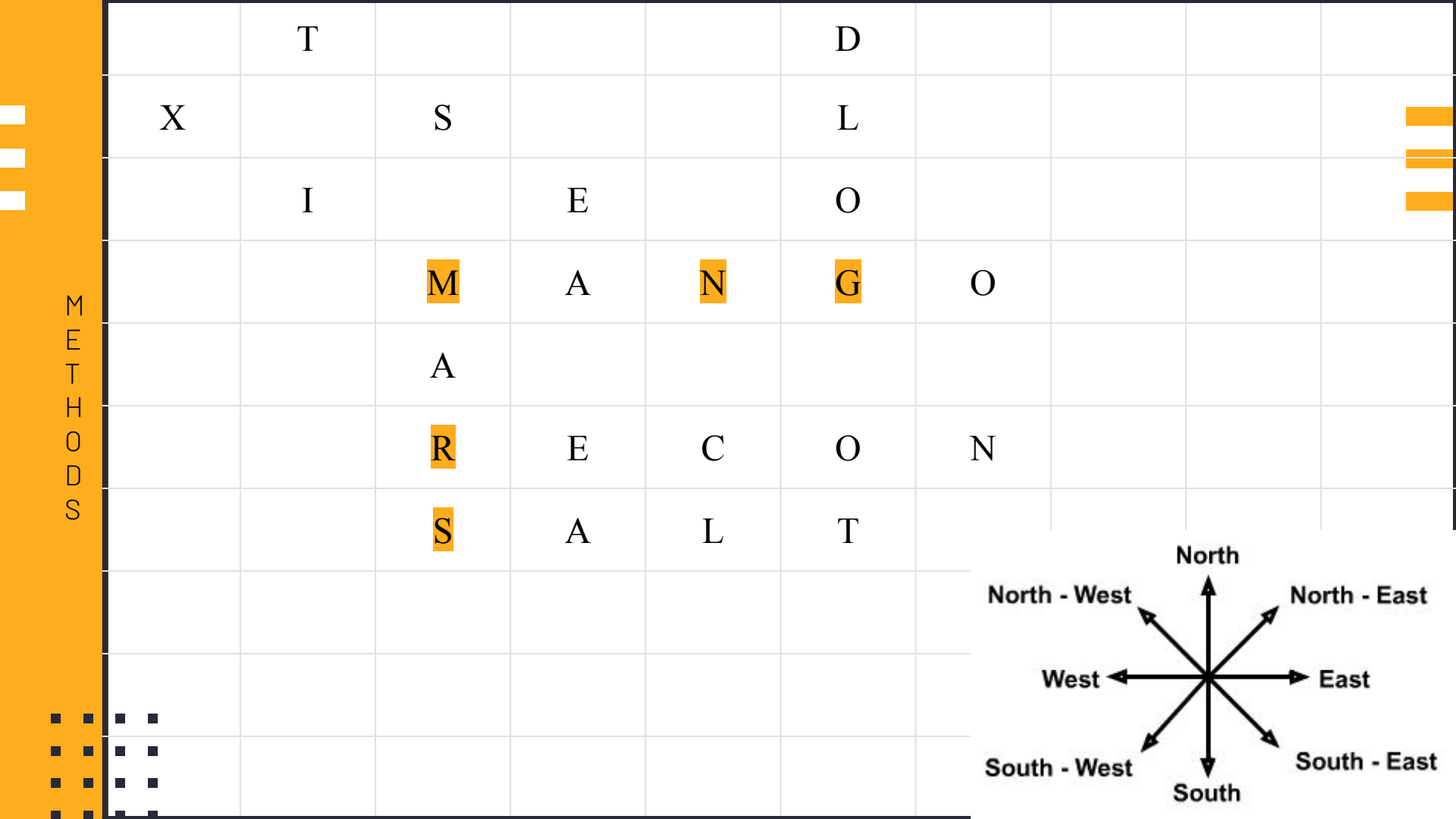




METHODS

		T		R					
		I		E	A				
		M	A	N	G	O			
			T	T	P	D			
					O				
				H	O				
			T		L				
		E							
	M								





X

T

S

D

L

I

E

O

M

A

N

G

O

A

R

E

C

O

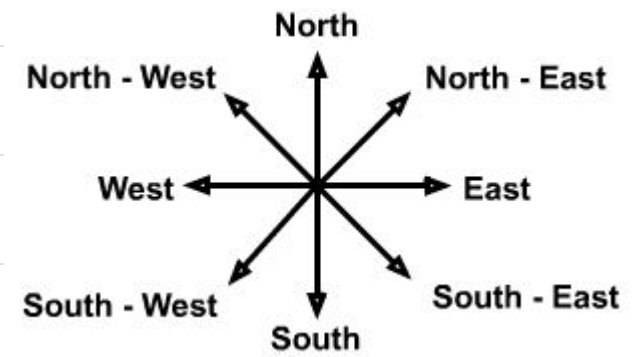
N

S

A

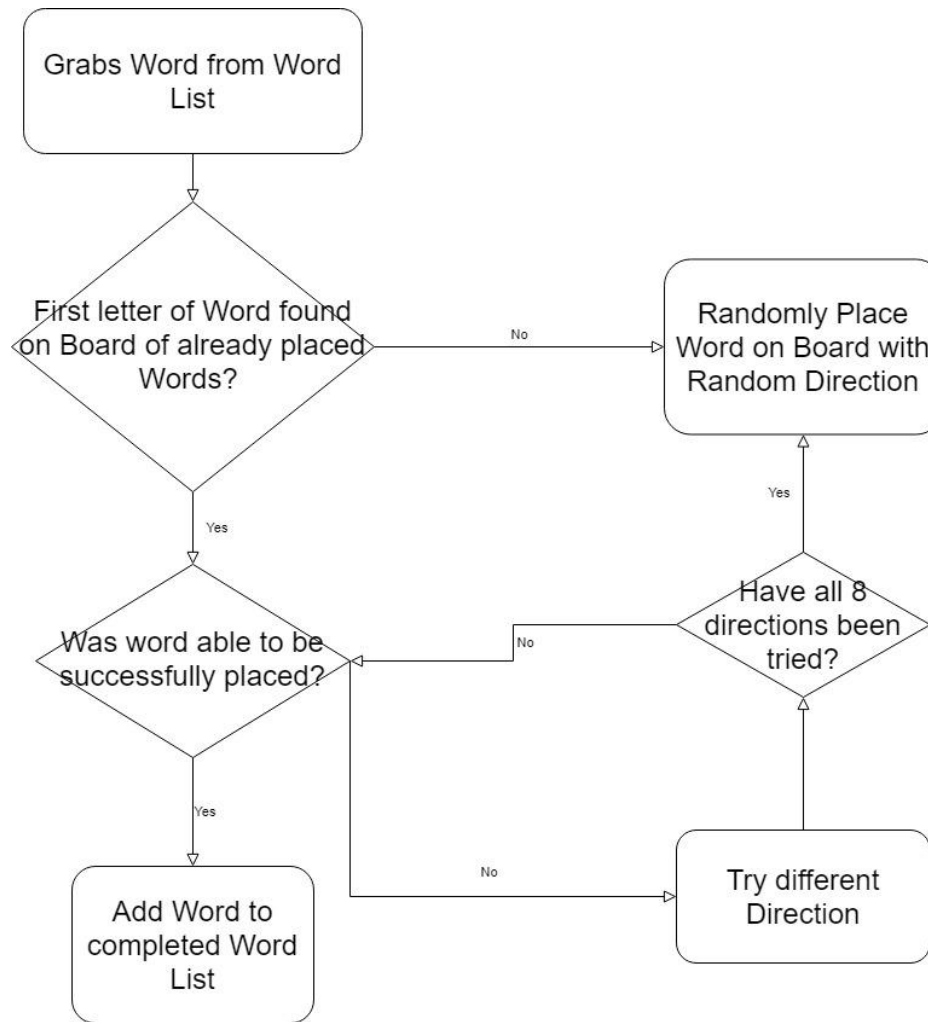
L

T



M
E
T
H
O
D
S





CURRENT WORD:mango
CURRENT WORD:gold
CURRENT WORD:mix
CURRENT WORD:recon
CURRENT WORD:nest
CURRENT WORD:salt
CURRENT WORD:neo

THE BOARD

```
* * * * * t * * * * *  
* * * * * l * * * * *  
* * t a * * * * *  
* * s * * * * *  
* * e * * * * *  
m a n g o l d * * *  
* i * e * * * * *  
* * x * o * * * * *  
* * n o c e r * * *  
* * * * * * * * * *  
m r l v w t z v a b  
x v s y l h v j n k  
q g t a u m o p x x  
u z s j g l w l z j  
p l e y f a w v a c  
m a n g o l d s f j  
a i q e x o e z r f  
b n x n o g c a t i  
s j n o c e r i x s  
e a y x w w x m u u
```




Demo



Strategies

- Independent
- Documentation
- Professors
- Trial and Error
- CSCI 350 Event Programming in Windows

Extensions

- Complex Algorithm
- Animations
- Difficulty
- Score w/ Timer
- Save Files



Thanks!



Any Questions?

```
trim(preg_replace('/\\\\\\\\\\\\\\\\/', '/', $image_src
)]['config'] = serialize($captcha_config);
na_config['code'],
mage_src

'gb') ) {
tr, $return_string = false, $separator = '
lace("/[^0-9A-Fa-f]/", '', $hex_str); // Get
;
== 6 ) {
dec($hex_str);
= 0xFF & ($color_val >> 0x10);
= 0xFF & ($color_val >> 0x8);
0xFF & $color_val;
str) == 3 ) {
hexdec(str_repeat(substr($hex_str, 0, 1), 2)
hexdec(str_repeat(substr($hex_str, 1, 1), 2)
hexdec(str_repeat(substr($hex_str, 2, 1), 2)
implode($separator, $rgb
```

Word Search Library

BoardPoint

Specific point on the board containing row and column of that specific point

BoardView

Draws and Measures each Tile to fit on the Board

WordSearchBoardView

Does the generation of the Word Search Board using an Algorithm as well as Touch Events

BoardWord

Every word on the Board has its direction and
startPoint(BoardPoint) which is used heavily in the algorithm

